

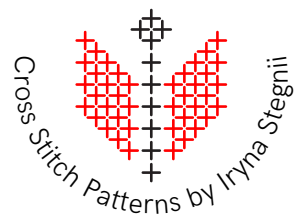
# Thistle Pillow Needlepoint Pattern

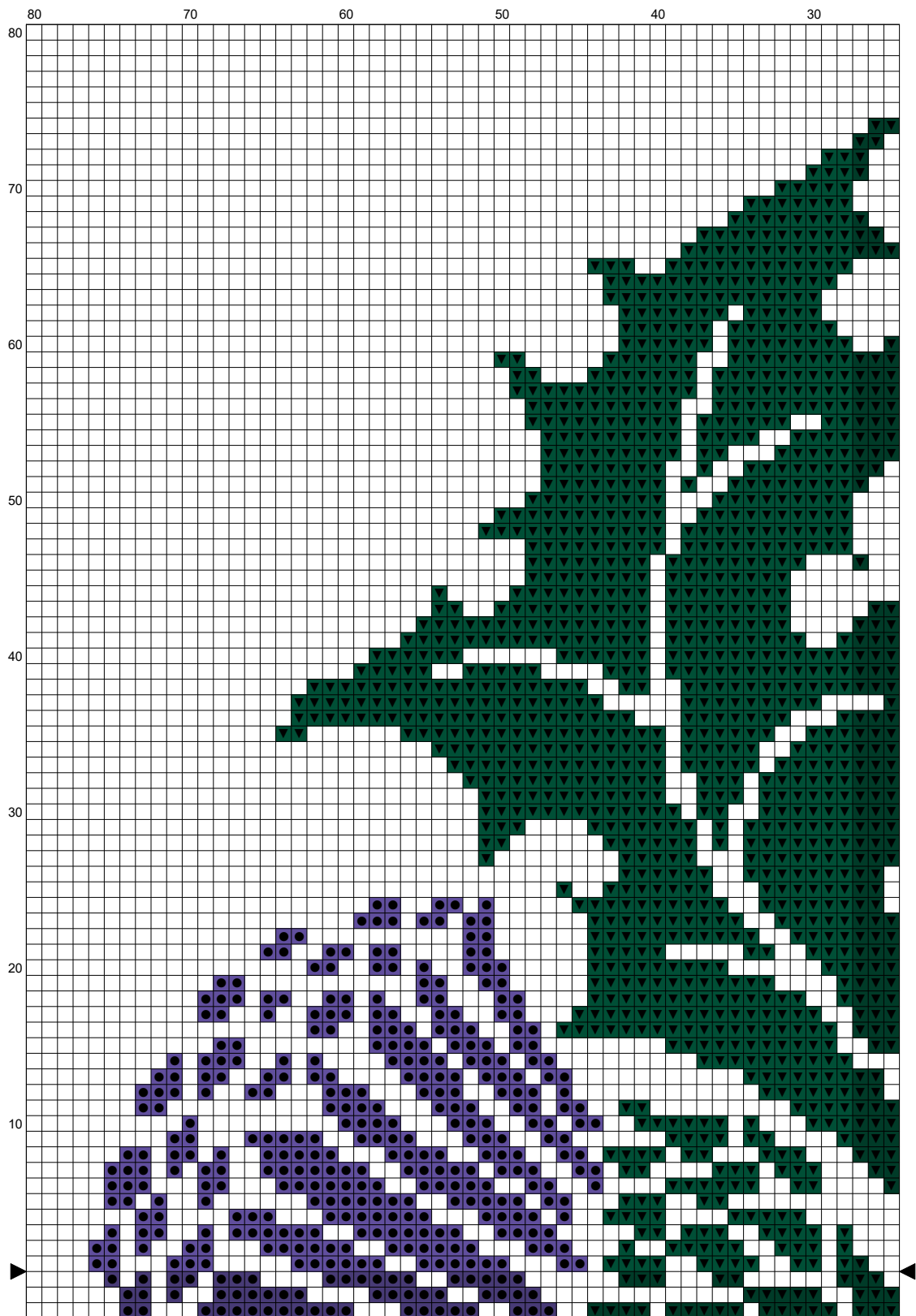


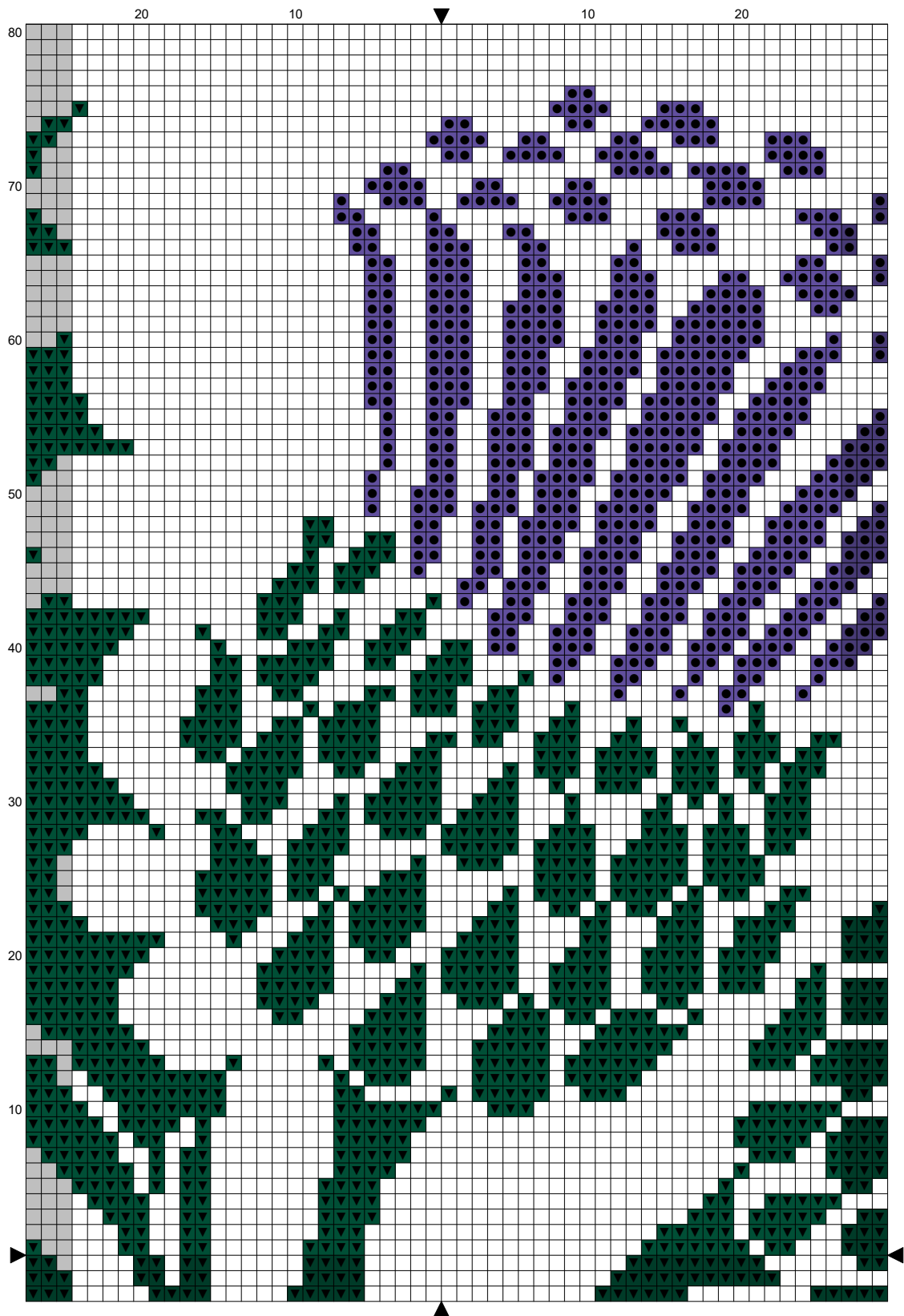
Stitches: 152 x 152

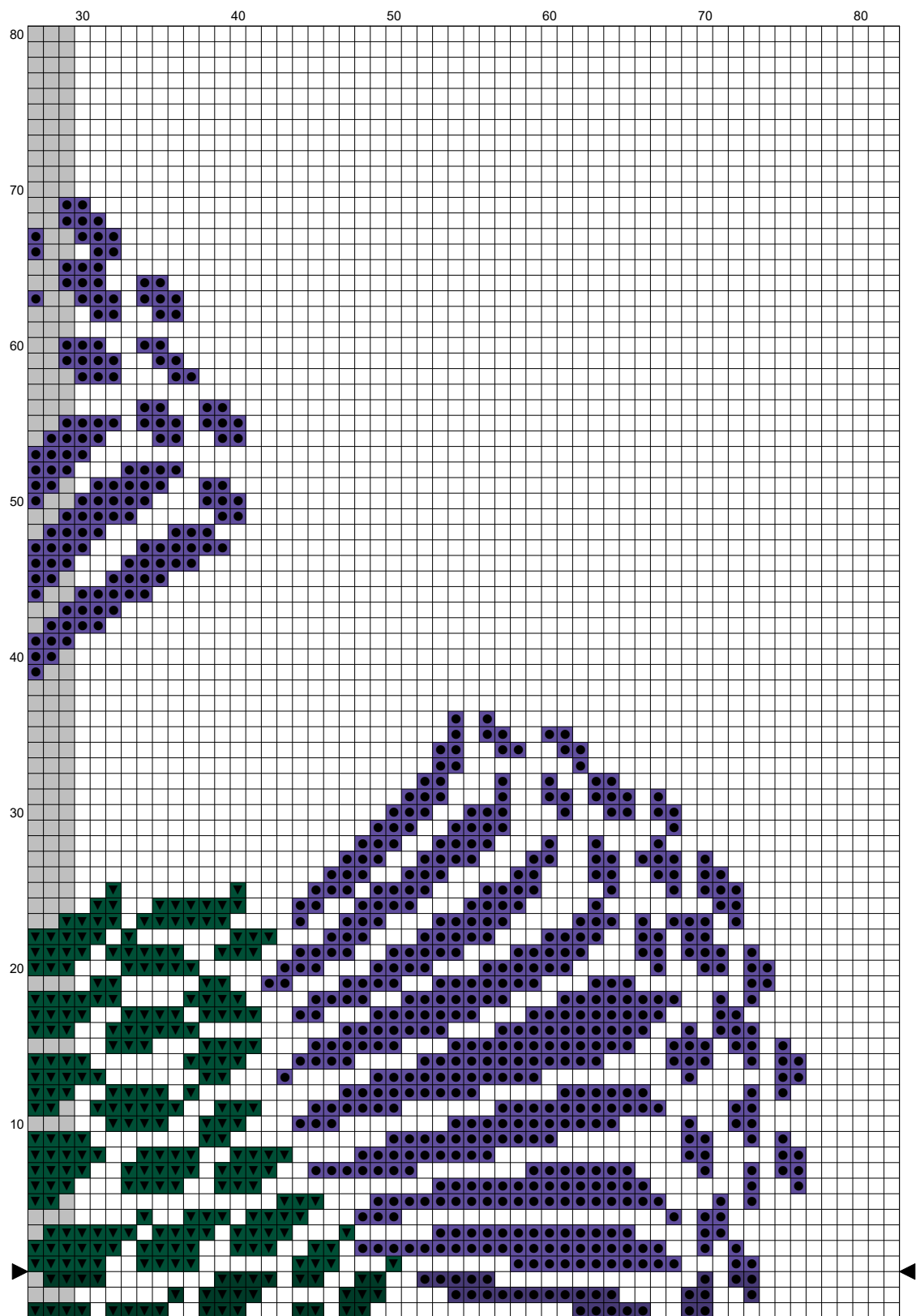
Size: 13.82 x 13.82 inches or 35 x 35 cm

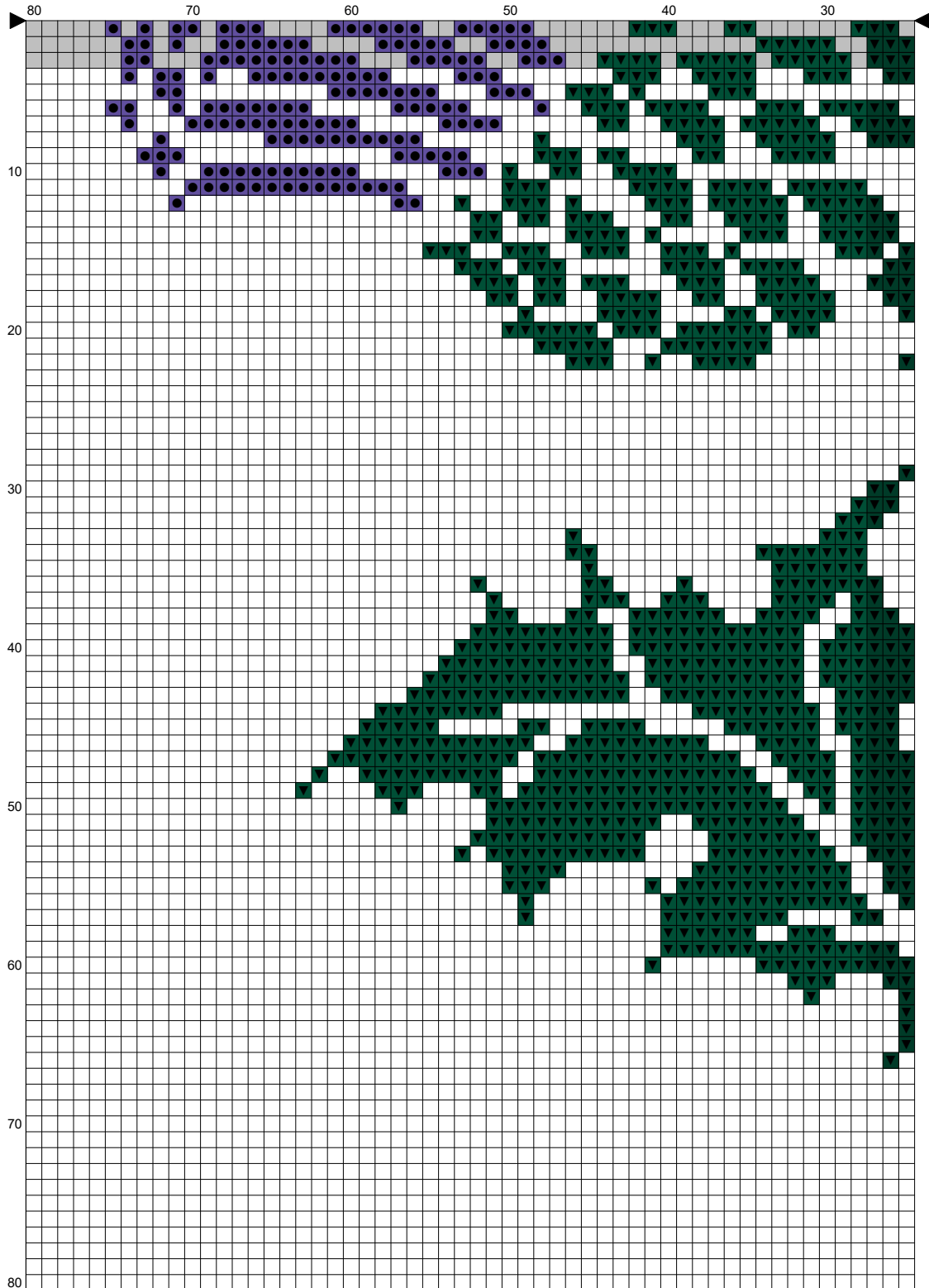
Find out more at [needlepointnook.com](http://needlepointnook.com)



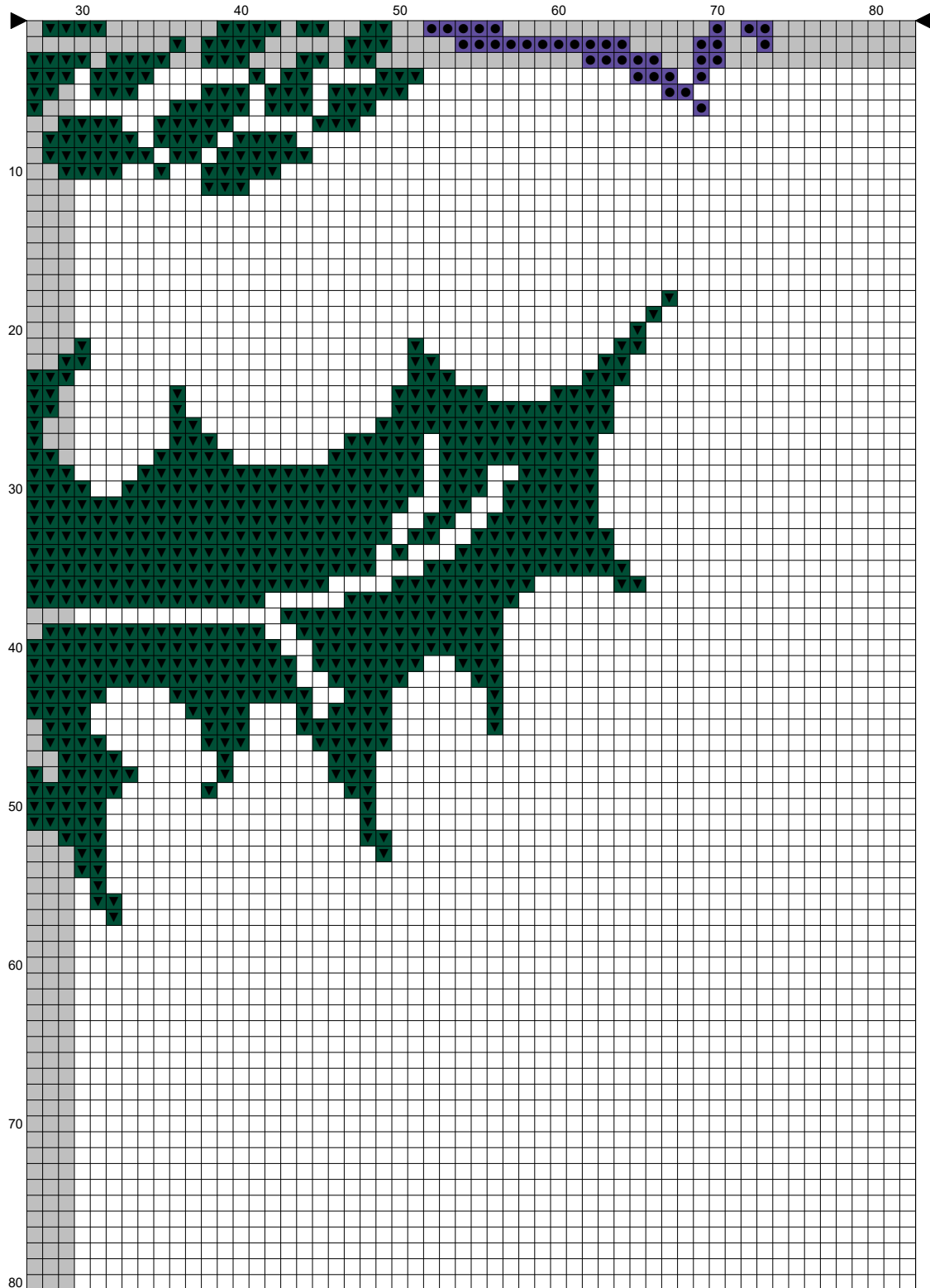


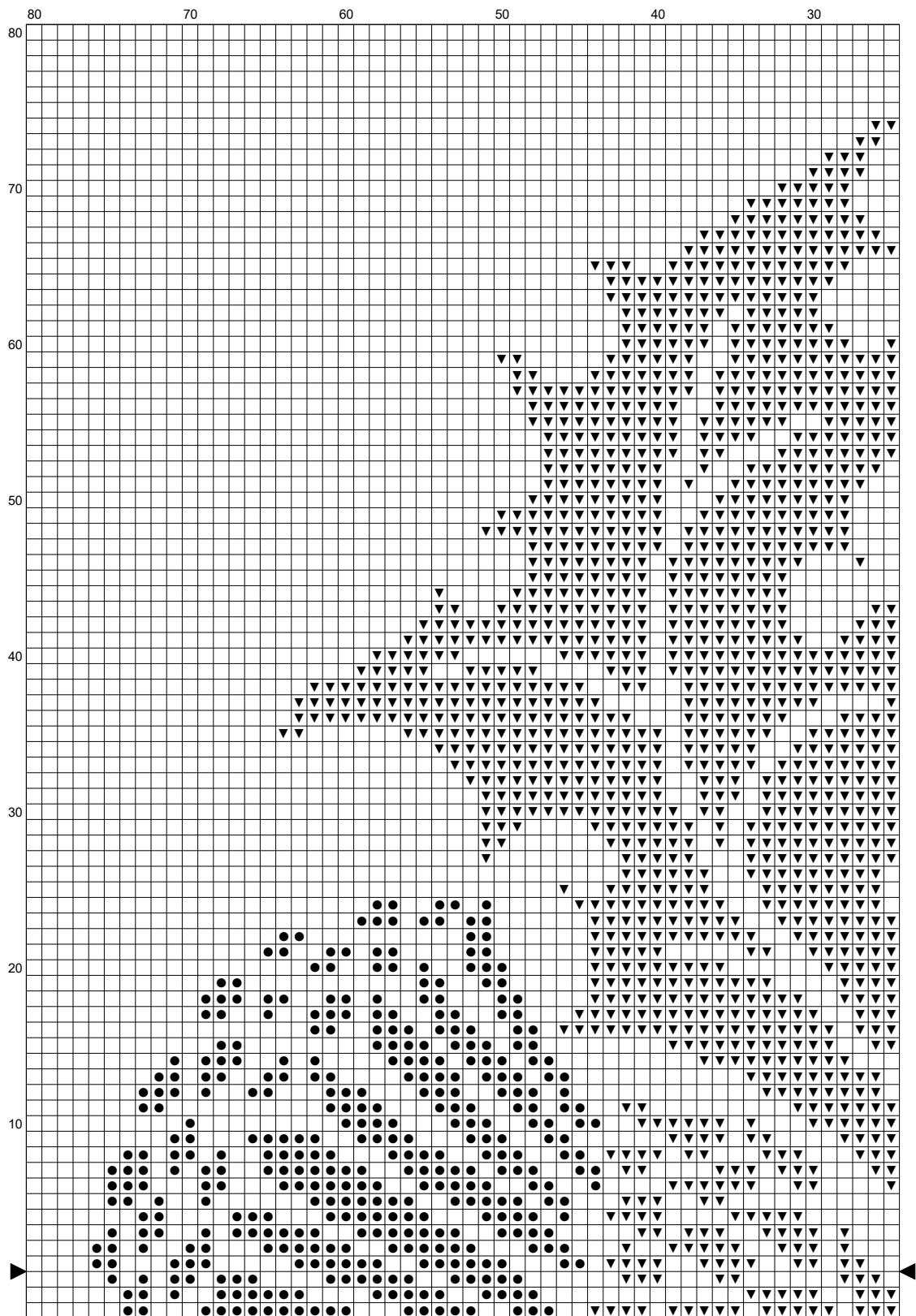




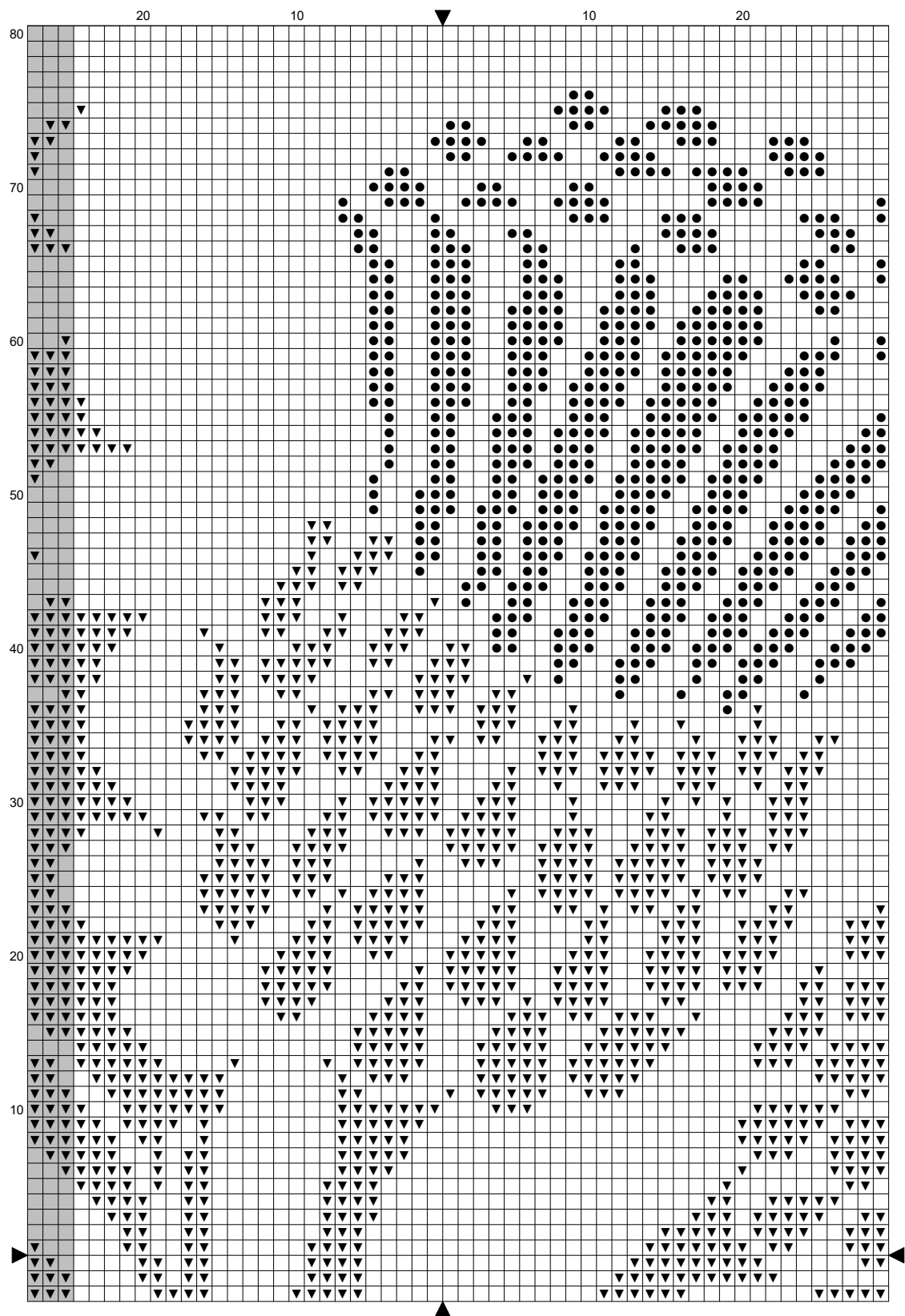


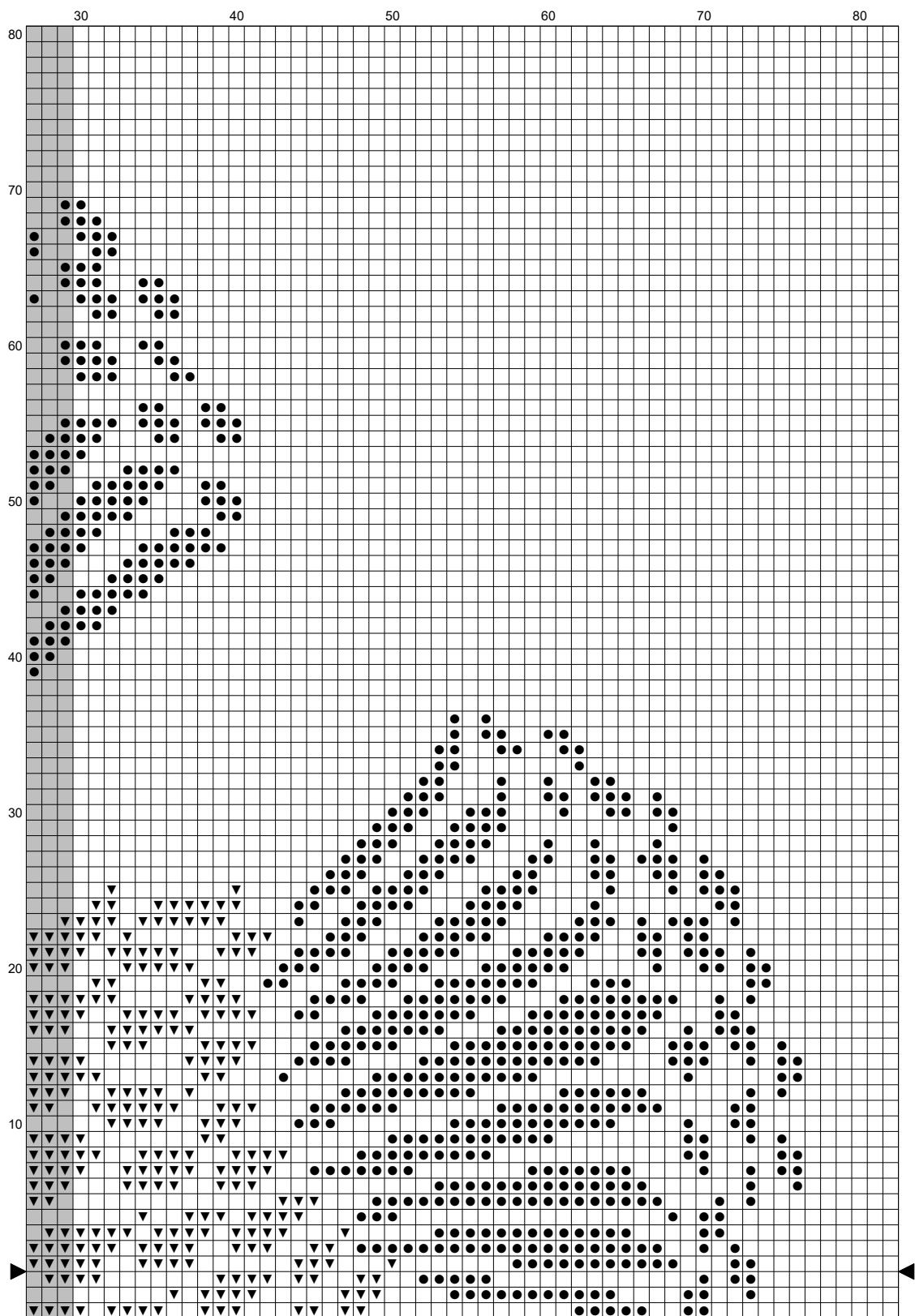


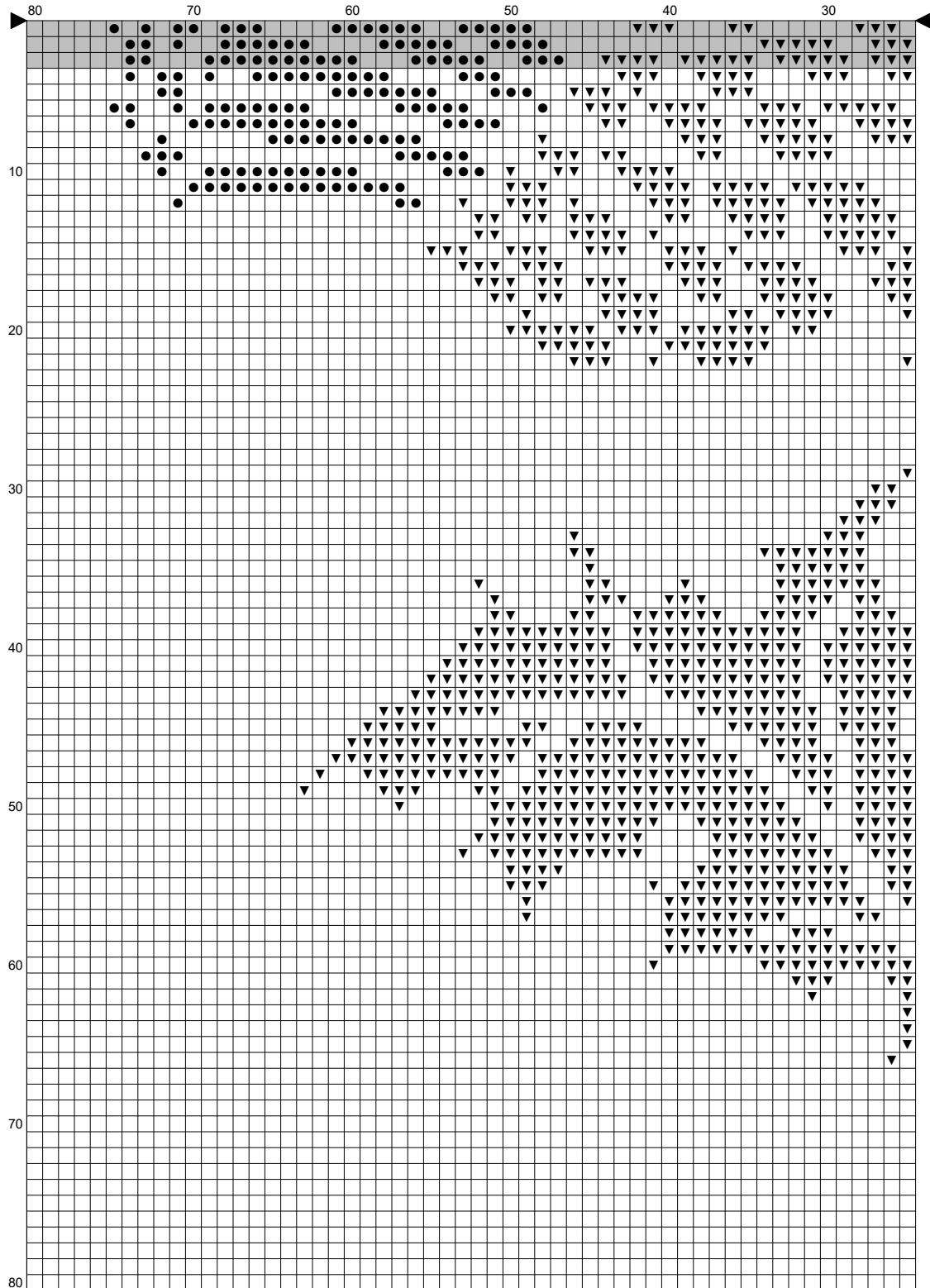


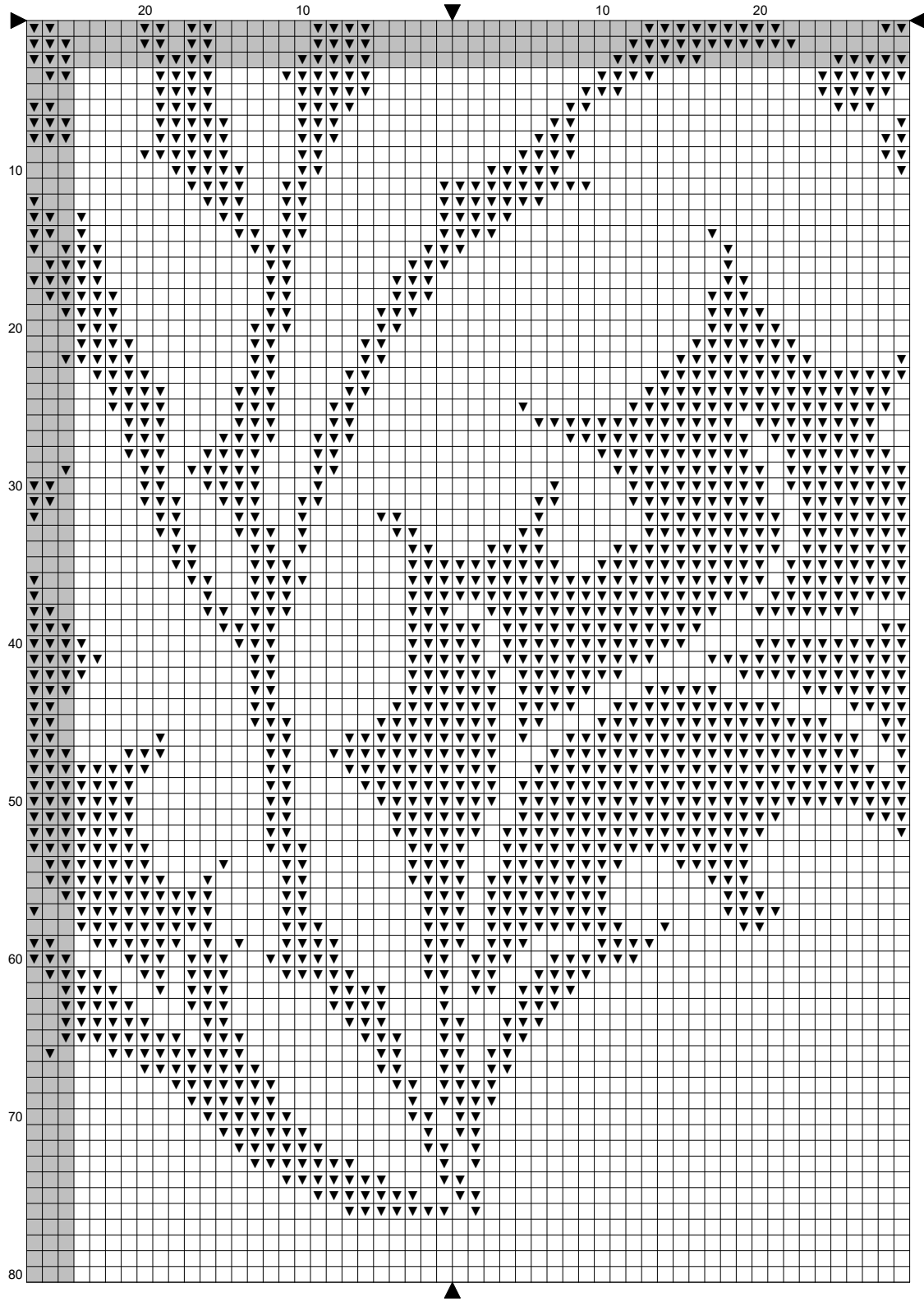


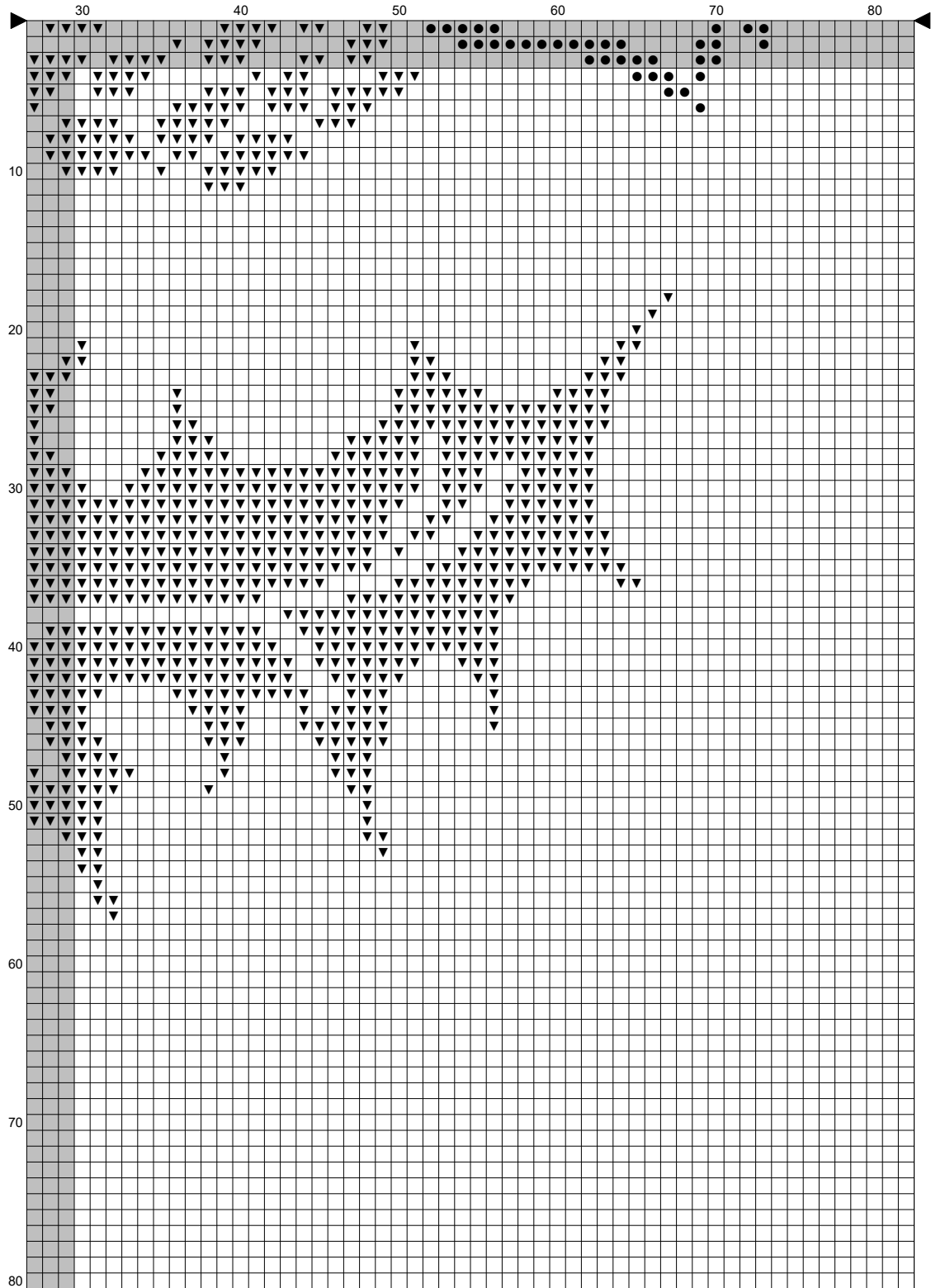












# How to Make a Needlepoint Pillow

## A Step-by-Step Guide

### Preparing

Before delving into your needlepoint project, ensure you have all the necessary supplies at your disposal:

1. Needlepoint canvas: Choose between mono or interlock canvas based on your preference and project complexity.
2. Threads: Opt for colors and materials that speak to your creativity, such as wool, cotton, or silk.
3. Tapestry needle: Select a blunt-tipped needle suitable for the canvas mesh size.
4. Embroidery frame: Secure your canvas in place, keeping it taut during the stitching process.
5. Scissors, a pencil, and graph paper (if using a counted needlepoint pattern) for designing your pattern.

### Selecting the Perfect Design

Let inspiration guide your selection process, whether it's an intricate floral pattern, a captivating geometric motif, or a cherished quote. You can either create your own design or choose from a pre-made pattern.

Starting with a simpler pattern to hone your skills is advisable if you're a beginner.

### Preparing the Canvas

Transfer your chosen design onto the needlepoint canvas using a pencil or a water-soluble pen. Leave ample space around the edges for the finishing touches and attach the pillow backing (proximately 1-2 inches).

### Commence the Stitching

Begin by threading your needle and securing the thread's end at the back of the canvas. There are various stitch techniques to explore, such as the tent stitch or the basketweave stitch. Experimenting with different stitches will add texture and depth to your design.

Once your needlepoint masterpiece is complete, follow these steps to craft your pillow:

1. Trim the excess canvas, leaving approximately a 1-inch border around the design.
2. Choose a backing fabric that complements your needlepoint and cut it to match the size of the trimmed canvas.
3. Align the needlepoint and backing fabric with their right sides facing each other and sew around the edges, ensuring to leave an opening for stuffing.
4. Carefully turn the pillow right side out, and fill it with your preferred stuffing material.
5. Sew the opening closed, and voila! Your custom needlepoint pillow is now ready to be showcased and admired!

With these simple yet essential steps, you can create a stunning needlepoint pillow! Happy stitching!

To explore my collection and start your next stitching project, visit my website at [needlepointnook.com](https://www.needlepointnook.com). There, you'll find many patterns that showcase my passion for blending artistry, culture, and the universe's wonders.

Have a question or need assistance? Don't hesitate to reach out to me directly at [iryna@needlepointnook.com](mailto:iryna@needlepointnook.com)

I'm always here to support you on your stitching journey, providing guidance, answering your queries, or simply sharing your progress in the excitement.

Please, subscribe to my blog with this link

<https://www.needlepointnook.com/50off>

and get access to all my patterns for \$22.50 per year only!

Thank you for choosing Needlepoint Nook as your destination for exceptional needlework patterns. Let's stitch our way together to endless creativity, shared inspiration, and the joy of bringing art to life.

Happy stitching!

Warm regards,  
Iryna Stegnii  
Needlepoint Nook

# Needlepoint Stitches Guide

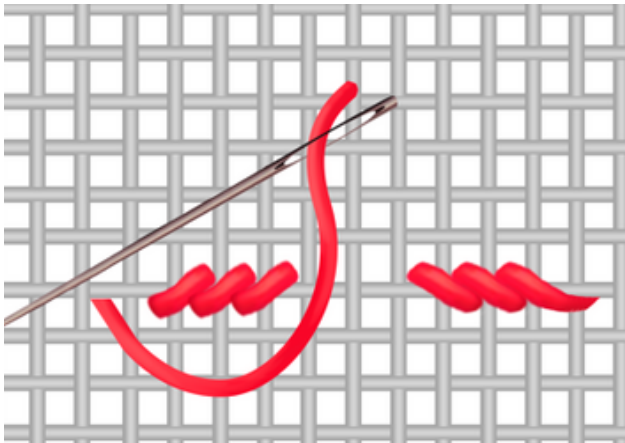
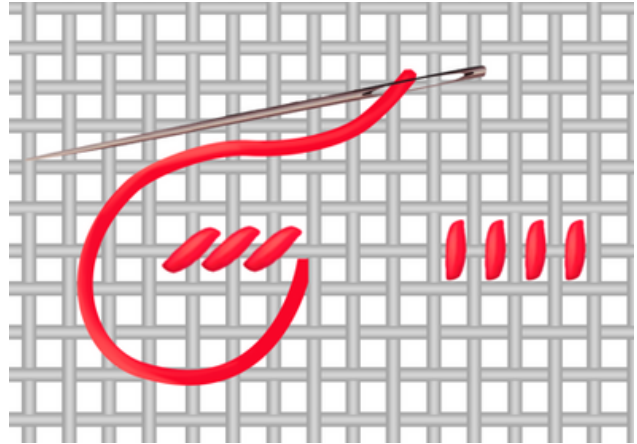
**Please use three basic needlepoint stitches for the needlepoint pillow:  
half cross stitch, continental stitch, and basketweave stitch**

## Half Cross Stitch:

Although the half cross stitch doesn't provide comprehensive canvas coverage, it is easy to learn and suitable for limited areas requiring only a few stitches of a single color.

To begin, position the needle at the top left of your canvas or the designated block of color. Proceed from left to right in a row across the canvas, and then return along the row below.

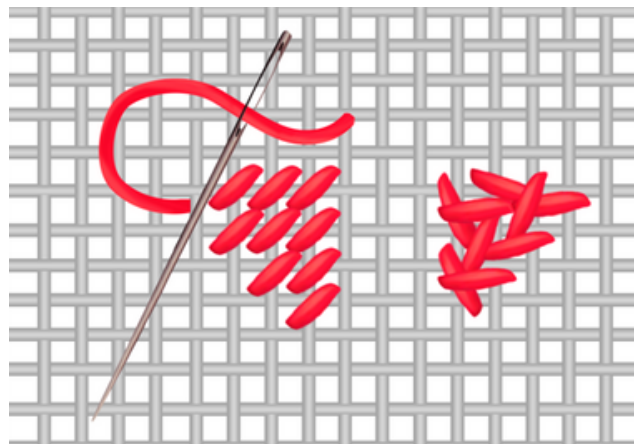
The distinguishing feature of the half cross stitch is its vertical stitch on the "wrong" side of the canvas.



## Continental Stitch:

The continental stitch effectively covers the canvas but may cause some distortion. Nonetheless, it is ideal for working in smaller areas and is commonly used.

You will observe a long diagonal stitch on the "wrong" side of the canvas.



## Basketweave Stitch:

The needlepoint basketweave stitch is considered the most optimal among the basic needlepoint stitches. It provides excellent coverage of the canvas with minimal distortion. Whenever you encounter a large area to be stitched, it is advisable to employ the basketweave stitch.

This stitch derives its name from the basketweave pattern it forms on the "wrong" side of the canvas. Work this stitch diagonally, commencing from the top right-hand corner of the designated area.

On the front of the canvas, all these basic needlepoint stitches appear like this

